



Embryo Tested Dishes – for High Quality Images

Now available: Embryo Tested Glass Bottom Dishes

Living up to Life

Leica
MICROSYSTEMS

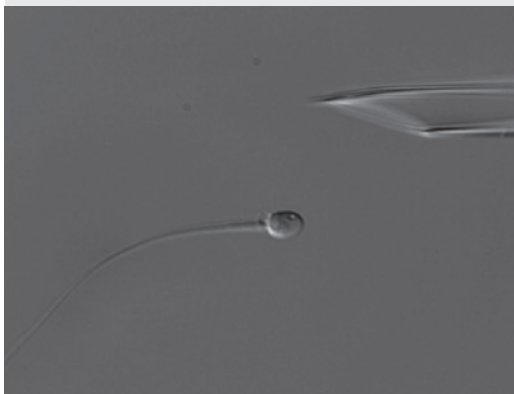
High Quality Dishes – for High Quality Images

Benefits

- Optical quality glass bottom for better imaging quality (RI-1.525)
- Lowest access angle for micropipette
- Embryo assay tested
- Perfect glass surface with a good superficial tension to get domed drops



Sperm selection at high resolution (IMSI)
Courtesy: Prof. H. Zech, Dr. M. Bach, Dr. T. Neyer,
Dr. A. Stecher, Dr. P. Vanderzwalmen, Dr. M. Zintz,
Dr. N. Zech
Institute für Reproduktionsmedizin und Endokrinologie,
Bregenz (Austria)



Sperm selection at high resolution (IMSI)
Courtesy: Prof. Dr. Imam Danasouri
Gemeinschaftspraxis für Repromedizin - IVF
Ulm (Germany)

For many applications glass bottom dishes are in use since many years. This is because images of highest resolution need a perfect “optical window”.

The thickness, the refractive index and the internal homogeneity of this window are important optical factors.

Now this quality is also available for ICSI and IMSI applications.

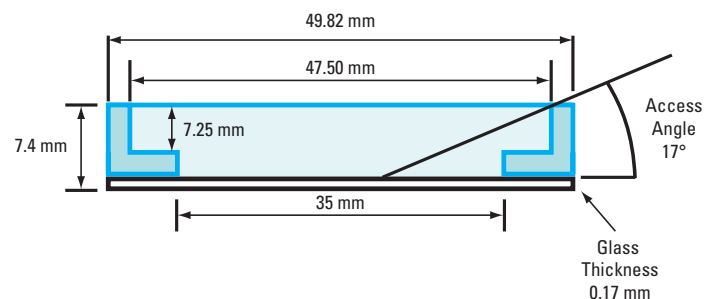
Glass bottom Dishes with 0.17mm thickness are essential for:

- Imaging with true Differential Interference Contrast (DIC)
- High resolution objectives

Ordering information:

Fluoro Dishes, glass bottom for best imaging quality, outer diameter 50mm, accessible glass window 35mm diam. Mouse-Embryo-Tested, 100 dishes, individually packed, FD5040-100

Order number: 11600270



For certificate and test results, please use the following link:

<http://www.gynemed.de>