

Leica LED2000 – LED2500

Powerful Illumination Stands for Stereomicroscopes

Living up to Life

Leica
MICROSYSTEMS

Powerful LED Illumination

The high quality Leica LED2000/LED2500 illumination stands are so robust they are suitable for almost any environment.

The LED2000 stand suits all incident light applications to provide a cost effective solution where no transmitted light is needed. With five illumination options available, you can choose exactly where and how much incident light you want to apply to your sample. This can range from applying all 7 LED's to achieve full brightness, a 4 point top light for shadow free illumination, 2 side LED's for improved contrast or 1 oblique LED where a semi-dark illumination is required. Each illumination option also provides a dimming control to allow brightness levels to be fully optimized to individual needs. With the light manager touch panel, each setting can be selected and easily reproduced.

The Leica LED2500 includes both incident and transmitted light capabilities, which can either be used together or controlled individually. With a 60mm active light diameter, the LED2500 is perfect for performing detailed inspections with consistent light levels across samples with a large field of view. The 5500° K color temperature also means that specimens can be examined with true color reproduction.

Moveable Arc Illumination

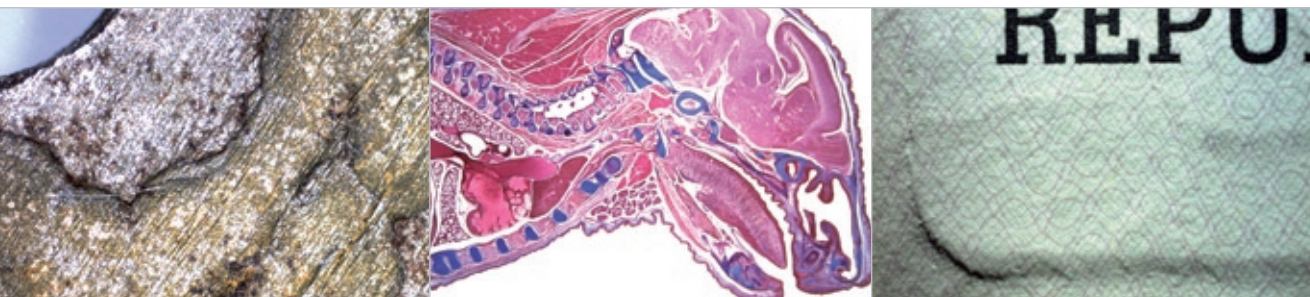
The LED2000/LED2500 provides an adjustable arc illumination, which is perfect for increasing the contrast level to exactly meet your requirements. This can be optimised for 1.0× (none), 1.6× and 2.0× supplemental lenses to achieve the desired results.

Maintenance Free

LED's have a lifespan of at least 25 000 hours and maintain a constant color temperature. The light-emitting diodes are preferable over traditional incandescent light. Due to intelligent heat dissipation, the Leica LED2000/LED2500 bases do not require a fan. This ensures that light vibrations do not hinder the inspection of a sample.

Clear as Daylight

The Leica LED2000 and LED2500 use the latest LED technology that closely resembles the light spectrum of daylight. As a result of "Pulse Width Modulation" (PWM), the color temperature remains constant during the complete dimming range. Thus, there is no need to readjust the white balance of a camera making the complete system easier to handle.



Corrosion of metal

Mouse (cross-section)

Identity documents examination



The image shows a Leica microscope with a white body and black base. Red callout boxes point to various features: the eyepieces, the objective lenses, the LED illumination system (top and side), the transmitted light path, and the control panel on the base. The Leica logo and 'EICA 24E' are visible on the microscope body.

- **All-in-One Solution**

- Easy for transportation
- Robust and compact design
- Built-in power supply (100 – 240V)
- Vibration free (no fan)
- Adjustable focus torque

- **3-Point arc light**

- Shows more structures of an object

- **State-of-the-art LEDs**

- 4-point top light
- Bright and homogeneous
- Shadow free

- **Built-in LED illumination**

- 25 000 hours service life time
- No bulb exchange needed
- Daylight quality at 6500K
- True color reproduction
- Constant color temperature
- Flicker free
- 5 programmed illumination settings
- Reproducible light conditions

- **Transmitted light**

- Bright and homogeneous
- 60mm active light diameter

- **Easy illumination control**

- 5 different programmed settings

Technical data for the Leica LED2000/LED2500

Illumination System	Leica LED2000/LED2500	
Illumination source	Power LED's, 1.2Watt (4 LED for ring light, 3 for oblique)	
Illumination types	Incident light (4-point ring light and oblique illumination) Transmitted light (LED2500 only)	
Average LED lifetime	25 000 hours	
Color temperature	6500°K (daylight), 5500 °K for transmitted light (LED2500 only)	
Cooling	Thermo-management for LED's, silent and vibration free	
Illumination control	Incident and transmitted light independently switchable	
Brightness control	10-step increments	
Brightness (Lux)	Incident light:	15500 lux
	Transmitted light:	13700 lux (LED2500 only)
Built-in power supply unit,	100V ... 240V ~ 50 / 60 Hz	
Voltage sensing		
Power consumption	max. 30W	
Conformity with standards	CE cUL UL	
ESD design	antistatic	



Equipment components

Order numbers

10 447 347	Leica LED2000
10 447 348	Leica LED2500

Power Cables

10 445 662	2m, EURO
10 445 661	2m, USA
10 280 636	2.5m, Switzerland
10 445 663	2m-2.5m, BS
10 447 346	2m, Japan
10 450 012	Power cable Argentina
10 450 013	Power cable Australia
10 450 014	Power cable China
10 450 015	Power cable Israel
10 450 016	Power cable Italy
10 450 017	Power cable South Africa